

Block bonding

(March 2024) (Second issue – supersedes December 2008)

The Technical Guidance Notes are produced by NHBC as guidance solely for our builder customers as to how to interpret the technical requirements in relation to the warranty cover provided by NHBC under its Buildmark, Buildmark Choice, Buildmark Link, Buildmark Solo, Buildmark Connect or any similar product from time to time. It has not been created or intended for distribution or use outside of that purpose. The information contained in this Technical Guidance Note does not constitute advice and is not to be relied upon by any third party. Nothing in this Technical Guidance Note is intended to, nor should it be taken to, create any legal or contractual relationship. Any third party who chooses to rely upon the information contained in the Technical Guidance Notes shall do so entirely at their own risk and NHBC accepts no duty of care or liability, however caused, in connection with its use or reliance by any third party.

Question

Where a separating wall continues beyond a stagger between homes to become an external wall, can the separating wall and external wall blockwork be toothed together?

Considerations

- To meet soundproofing and thermal requirements different types and density of blocks may be required in the separating and external walls.
- Part E Robust Details require that the blocks forming the separating wall should extend at least 300mm beyond the stagger before changing to the blocks used in the external wall.
- For short sections of wall the comparative drying and thermal movement of concrete and aircrete blocks is very similar and is not likely to give rise to cracking.

Answer

It is acceptable for the two types of blockwork to be toothed together, provided the separating wall blockwork extends at least 300mm beyond the stagger (See Figure 1).

In the case of wet plaster, differences in the suction of the two types of blockwork may cause cracking of the finish. This can be controlled by the appropriate use of primer/sealer.

In the case of dry-lining, cracking is not likely and so no precautions are necessary.

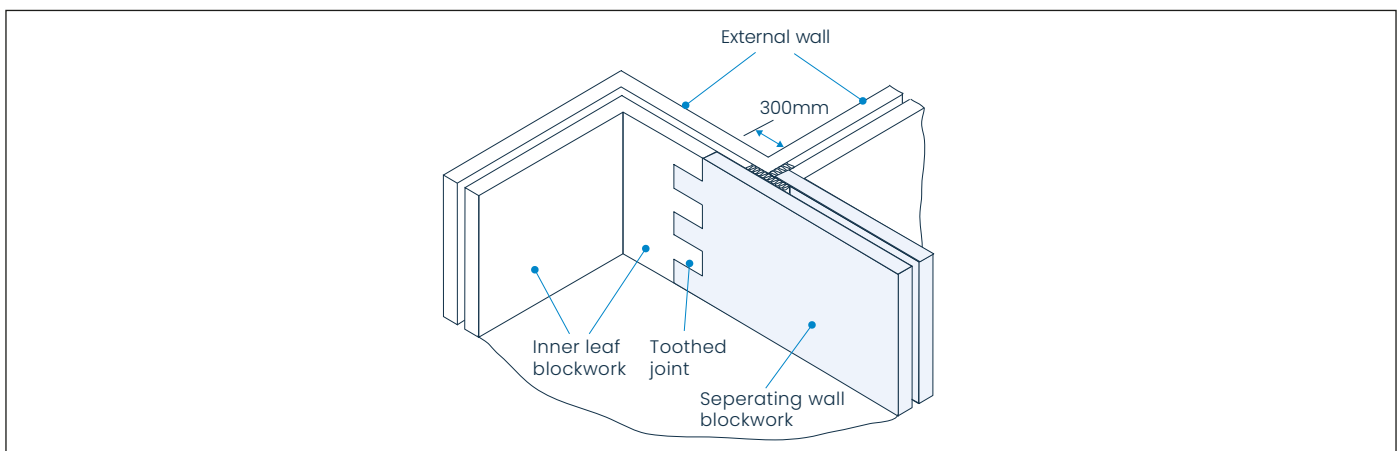


Figure 1 – Block bonding



NHBC, NHBC House, Davy Avenue, Knowlhill, Milton Keynes, Bucks MK5 8FP
Tel: 0344 633 1000 Web: nhbc.co.uk

National House-Building Council (NHBC) is authorised by the Prudential Regulation Authority and regulated by the Financial Conduct Authority and the Prudential Regulation Authority for carrying on insurance business and insurance distribution activities.

NHBC is registered in England and Wales under company number 00320784. NHBC's registered address is NHBC House, Davy Avenue, Knowlhill, Milton Keynes, Buckinghamshire, MK5 8FP. Note that only certain parts of our products and services are within the scope of UK financial services regulations. For more information on our products and services, please see our website nhbc.co.uk or your NHBC product documentation.